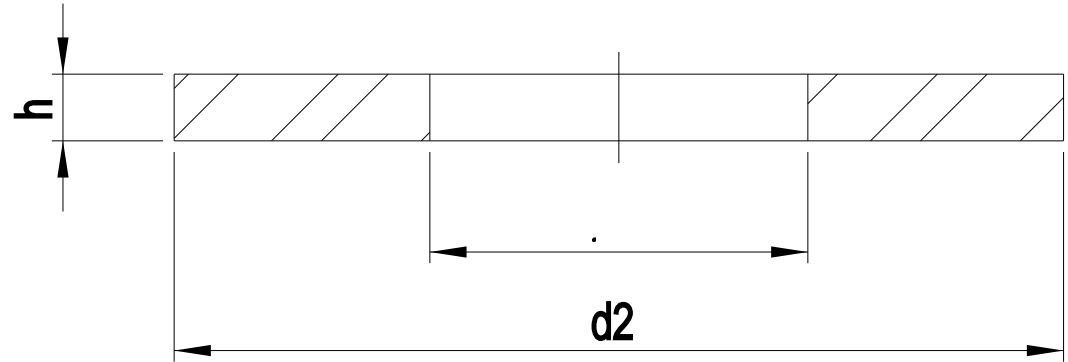
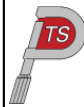


Further Information

Diameter (d)	d1	d2	h
M1.6	1.7	4.00-3.70	0.35-0.25
M1.7	1.8	4.50-4.20	0.35-0.25
M2	2.2	5.00-4.70	0.35-0.25
M2.5	2.7	6.00-5.70	0.55-0.45
M3	3.2	7.00-6.64	0.55-0.45
M3.5	3.7	8.00-7.64	0.55-0.45
M4	4.3	9.00-8.64	0.90-0.70
M5	5.3	10.00-9.64	1.10-0.90
M6	6.4	12.00-11.57	1.80-1.40
M7	7.4	14.00-13.57	1.80-1.40
M8	8.4	16.00-15.57	1.80-1.40
M10	10.5	20.00-19.48	2.20-1.80
M12	13	24.00-23.48	2.70-2.30
M14	15	28.00-27.48	2.70-2.30
M16	17	30.00-29.48	3.30-2.70
M18	19	34.00-33.38	3.30-2.70
M20	21	37.00-36.38	3.30-2.70
M22	23	39.00-38.38	3.30-2.70
M24	25	44.00-43.38	4.30-3.70
M27	28	50.00-49.38	4.30-3.70
M30	31	56.00-55.26	4.30-3.70
M33	34	60.00-58.80	5.60-4.40
M36	37	66.00-64.80	5.60-4.40
M39	40	72.00-70.80	6.60-5.40
M42	43	78.00-76.80	8.00-6.00
M45	46	85.00-83.60	8.00-6.00
M48	50	92.00-90.60	9.00-7.00
M52	54	98.00-96.60	9.00-7.00
M56	58	105.00-103.60	10.00-8.00



 PRECISION TECHNOLOGY SUPPLIES <small>Stainless Steel Industrial Fastenings & Precision Turned Parts</small>	Part No. A12507AA4
www.pts-uk.com +44 (0)1342 410758	M7 FORM A FLAT WASHER DIN 125 A4 STAINLESS STEEL
Information in this drawing is provided for reference only	