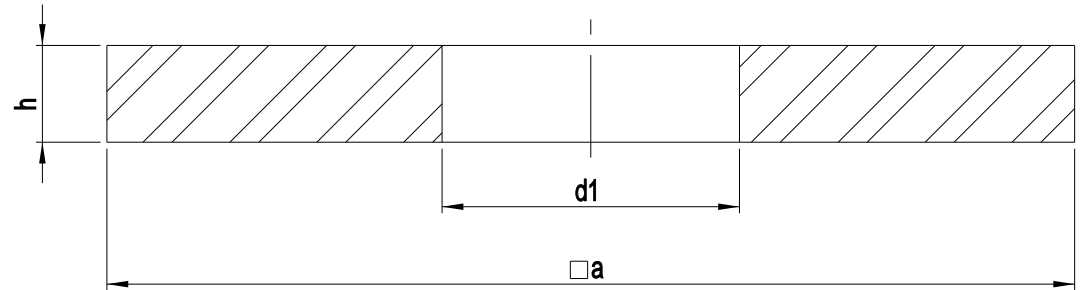



Further Information

Diameter (d)	d1 nom	d1	a nom	a	h nom	h
M10	11	11.43-11.00	30	30.00-28.70	3	3.6-2.4
M12	13.5	13.93-13.50	40	40.00-38.40	4	4.6-3.4
M16	17.5	18.20-17.50	50	50.00-48.40	5	6.0-4.0
M20	22	22.84-22.00	60	60.00-58.10	5	6.0-4.0
M22	24	24.84-24.00	70	70.00-68.10	6	



 PRECISION TECHNOLOGY SUPPLIES <small>Stainless Steel Industrial Fastenings & Precision Turned Parts</small>	Part No. A43610A4
www.pts-uk.com +44 (0)1342 410758	M10 SQUARE WOOD CONSTRUCTION WASHER (11 X 30 X 3) DIN 436 A4 STAINLESS STEEL
Information in this drawing is provided for reference only	